

RKI GX-6000 Multi Gas Meter with PID

The RKI GX-6000 portable multi-gas monitor that simultaneously measures LEL, O₂, H₂S, CO, and VOCs. The instrument features a strong internal sample pump, five operational modes, and a large auto-rotating LCD display – making it ideal for confined space entry, VOC monitoring, and leak investigation applications. The GX-6000 can also be configured for benzene-specific measurements in ppb concentrations.

FEATURES

- Choice of six operating modes:
 - 1 Normal Mode
 - 2 Bore Hole Mode
 - 3 Leak Check Mode
 - 4 Inert
 - 5 Snap Log
 - 6 Benzene Specific
- Sample draw up to 50 feet
- Dual smart sensor ports for multiple PID lamps, IR, or Toxic Sensors
- Bright visual, loud audible alarms with vibration
- Man down and panic alarm standard
- Peak bar displayed
- Rugged IP-67 Rating
- Intrinsically safe ATEX/IECEx/cCSAus
- Interchangeable Battery Pack – Alkaline or Li-Ion
- Extended 14 hour continuous operation with Li-Ion Battery
- Field serviceable sensors, batteries, filters, and pump

APPLICATIONS

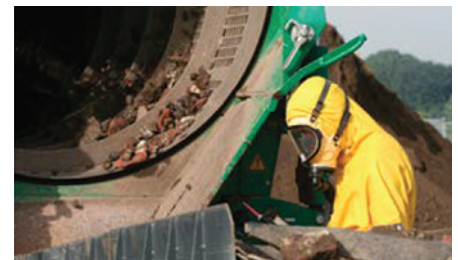
- Confined Space Entry
- Hazmat Response
- Arson Investigation
- Remediation Site Monitoring
- Perimeter
- Leak Detection
- On-person Worker Safety



Confined Space Entry



Leak Investigation



VOC Monitoring



Fire Industry

CALL GEOTECH TODAY

(800) 833-7958

Geotech Environmental Equipment, Inc.

2650 East 40th Avenue • Denver, Colorado 80205

(303) 320-4764 • FAX (303) 322-7242

email: sales@geotechenv.com • website: www.geotechenv.com

SPECIFICATIONS

Gases & Detectable Ranges

Gas	Measuring Range	Reading Increment	Alarm Set Points	Accuracy (which ever is greater)
PID Sensors				
10.6 Lamp	600 VOC's	0-50,000 ppb	1 ppb: (< 5,000 ppb) 10 ppb: (> 5,000 ppb)	A1: 5,000 ppb A2: 10,000 ppb
		0-6,000 ppm	0.1 ppm: (< 600 ppm) 1 ppm: (> 600 ppm)	A1: 400 ppm A2: 1,000 ppm
10.0 Lamp	Benzene Specific	0.1-50 ppm	0.01 ppm (0 ~ 10 ppm) 0.1 ppm (10 ~ 50 ppm)	No Alarms
	300 VOC's	0-100 ppm	0.01 ppm (0 ~ 10 ppm) 0.1 ppm (10 ~ 100 ppm)	A1: 5 ppm A2: 10 ppm
11.7 Lamp	High Voltage Lamp	0-1000 ppm	0.1 ppm	A1: 400 ppm A2: 1,000 ppm
Toxics (EC Sensors)				
Ammonia (NH ₃)	0-400.0 ppm	0.5 ppm	A1: 25 ppm A2: 50 ppm	±10% of reading or ±5% of full scale
Chlorine (Cl ₂)	0-10.00 ppm	0.05 ppm	A1: 0.5 ppm A2: 1.0 ppm	
Hydrogen Cyanide (HCN)	0-15.0 ppm	0.1 ppm	A1: 5 ppm A2: 10 ppm	
Nitrogen Dioxide (NO ₂)	0-20.00 ppm	0.05 ppm	A1: 3 ppm A2: 6 ppm	
Sulfur Dioxide (SO ₂)	0-99.90 ppm	0.05 ppm	A1: 2 ppm A2: 5 ppm	
IR Sensors				
Carbon Dioxide (CO ₂)	0-10,000 ppm	20 ppm	A1: 5,000 ppm TWA 5,000 ppm	±5% of reading or ±2% of full scale
	0-10.00% Vol.	0.02%	A1: 0.50% Vol. A2: 3.00% Vol. STEL 3.00% Vol. TWA 0.50% Vol.	
Methane (CH ₄)	0-100% LEL 0 - 100% Vol.	1% LEL/0.5% Vol.	A1: 10% LEL A2: 50% LEL	
Hydrocarbons	0-100% LEL 0-30% Vol.	1% LEL/0.5% Vol.	A1: 10% LEL A2: 50% LEL	
Catalytic				
Hydrocarbons (CH ₄ , std)	0-100% LEL	1% LEL	A1: 10% LEL A2: 50% LEL	±5% of reading or ±2% LEL
Galvanic				
Oxygen (O ₂)	0 ~ 40.0% Vol.	0.1% Vol.	A1: 19.5 Vol. A2: 23.5 Vol.	±0.5% O ₂
Electro Chemical				
Carbon Monoxide (CO)	0-500 ppm	1 ppm	A1: 25 ppm A2: 50 ppm TWA 25 ppm STEL 200 ppm	±5% of reading or ±5 ppm
Hydrogen Sulfide (H ₂ S)	0-100.0 ppm	0.5 ppm	A1: 5.0 ppm A2: 30.0 ppm TWA 1.0 ppm STEL 5.0 ppm	±5% of reading or ±2 ppm

Standard 4 Gas Sensor Slots

Catalytic
Galvanic
Standard Electro Chemical



Smart Sensor Slots

PID Sensors
Smart Electro Chemical (EC Sensors)
IR Sensors (Infrared)

RKI GX-6000 Multi Gas Meter with PID

GENERAL SPECIFICATIONS

Alarm Types	<u>Gas Alarm</u> Low and high adjustable	<u>Man-Down</u> 1st - self reset 2nd - latching	<u>Trouble</u> Low Flow Sensor Connection Low battery Circuit Error Calibration range
Sample Method	Sample draw pump, flow rate 0.45 LPM, 50 foot sample range		
Display	Digital LCD, autobacklight, peak bar display, auto display rotation, and customize order of gases		
Audible Alarm	95 dB at 1 ft.		
Languages	English, Spanish, French, German, Italian, Japanese, Korean, Portuguese, Russian		
Continuous Operation	14 hours on Lithium-ion battery pack. Complete recharge in 3 hours. 8 hours Alkaline battery pack (3 AA size within each pack)		
Operating Temp. & Humidity	-4°F to 122°F (-20°C ~ +50°C), 0-95% RH non-condensing		
Response Time	Within 30 seconds (T90)		
Dimensions & Weight	2.6" W x 7.8" H x 2" D (200 H x 68 W x 52 D mm) 14 ounce (400g) with lithium battery pack		
Case Material	Dust and water resistant with IP-67 approval (exclude sample hose and probe)		
Safety Design/ Approvals	Explosion Proof: IECEx , ATEX , TIIS , cCSAus Explosion Class: Ex ia IIC T4 Ga Others: CE Marking		
Standard Features	<ul style="list-style-type: none"> • 2 Smart sensors slots auto recognize sensor changes • Library of over 600 VOCs • User defined VOC list. Up to 30 frequently used • Recent VOC list for last 8 selected gases • Pump and circuit status indicators • User & station ID selection menu • Datalogging (interval, alarm trend, station and user ID) • Snap logging - on demand data logging • Demand zero/Auto zero • BUMP and CAL expiration alarm • Flashlight • IrDA communication • LEL sensor protection mode 		
Standard Accessories	<ul style="list-style-type: none"> • Rubber boot • Hand strap • Probe with hydrophobic & dust filter 3' Teflon lined hose • Benzene pre-filter tubes and holder (benzene versions) • Belt clip • Tapper nozzle 		
Optional Accessories	<ul style="list-style-type: none"> • SDM-6000 calibration station • Bundles with instrument carrying case and accessories • Flexible probes • Up to 50 foot sample hoses • Filter set • IrDA cable 		
Warranty	Two years material (including sensors) and workmanship. One year for PID sensor (Two months for 11.7 eV lamp)		

Optional instrument carrying case & accessories



SDM-6000 Calibration Station



Hose lengths up to 40'



Flexible Probe