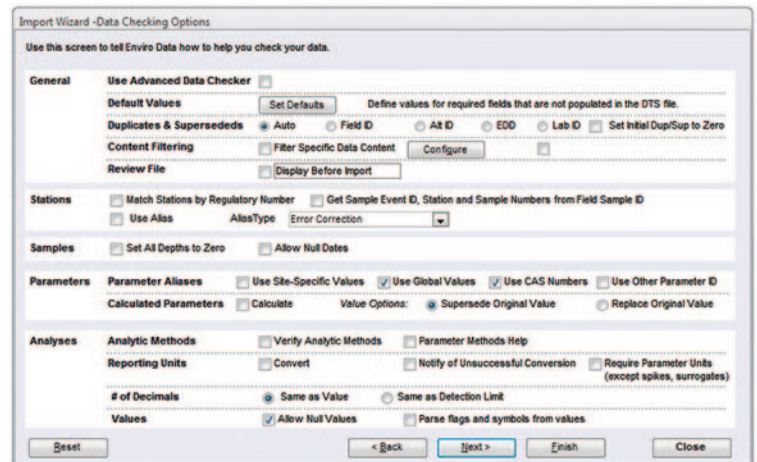


Enviro System Software is an environmental data management and statistical analysis software suite that is powerful, affordable, and easy to use. From planning sample events to creating tables and maps for reporting - GCS Enviro System Software is a professional-grade tool that saves time while improving data quality, site management, and reporting tasks.

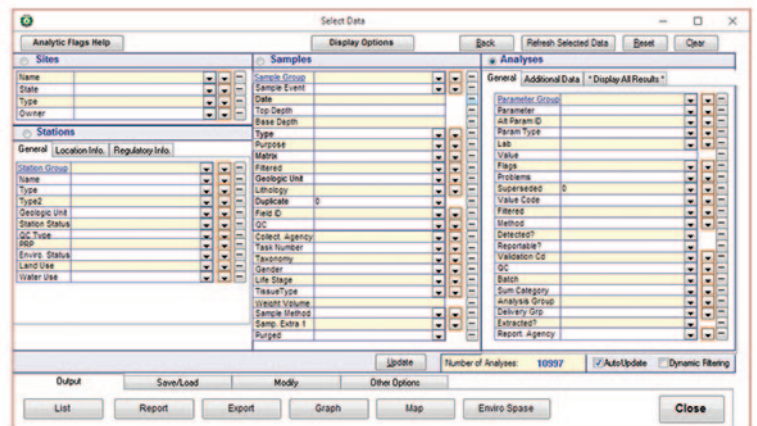
An advantage to Enviro Cloud's data access to the cloud is that there is less to worry about where your data is. It's always available wherever you are.

## BENEFITS

- **Simple Architecture with Remote Desktop** – Microsoft Windows or Mac OS
- **Excellent Performance** – often faster than local desktop or local networks
- **Great Value** – no need for local server, IT staff, or expensive hardware
- **Broad Access** – multiple user access at the same time, anytime
- **Secure** – cloud systems are backed up with automated failover
- **In Sync** – data storage with Access, SQL, and Azure
- **Scalable** – for small to large organizations and projects
- **Automate** – chain of custody and sample labels
- **Live Online Demonstration**
- **Best support in the industry**



Wizard-assisted import



Easy data selection

**CALL GEOTECH TODAY (800) 833-7958**

**Geotech Environmental Equipment, Inc.**

2650 East 40th Avenue • Denver, Colorado 80205

(303) 320-4764 • FAX (303) 322-7242

email: sales@geotechenv.com • website: www.geotechenv.com

### ENVIRO SYSTEM SOFTWARE ADD-ONS



**Enviro Data** is a local network data storage management system that organizes environmental field and laboratory data for quick access to current and historic results, reports, graphs, and maps.

Features:

- Data integrity enforced
- Generates labels and COCs forms
- Data verification and validation
- Optional cloud-based data management available



**Enviro Späse** compliments Enviro Data by adding a Geographical Information System (GIS) layer and tools for greater accuracy and efficiency of organized data management.

Features:

- Impressive means of displaying data to clients
- Easy to use
- Inexpensive to adopt
- ArcGIS driven



**Enviro Portal** an online website where the public or individuals within an organization can view shared data sets. Embedded tools allow users to select views via. graph, table, and even enables download features.

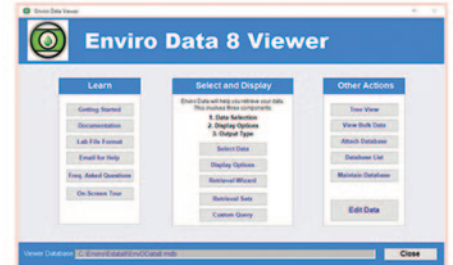
Features:

- Means of publicly displaying data externally
- Easy to use
- Inexpensive to adopt

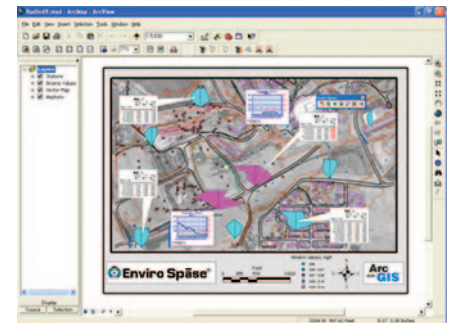


**Enviro Cloud** implementations are based on the same powerful and time-tested Enviro Data software that you would install on your desktop. So you don't give up any functionality when you go to the cloud.

This means that you don't have to install any software or data locally, with no need to deal with servers, your IT department, or other hassles. You can provide access to the software and data to others, without having to worry about distance, connection speeds, and so on. Your Enviro Data databases can be in Access or SQL server, depending on your needs.



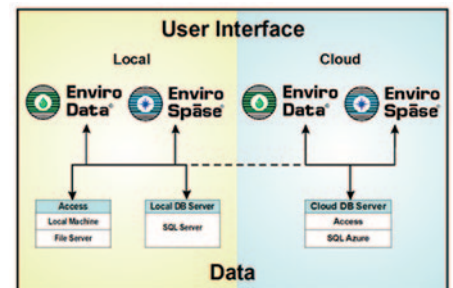
Enviro Data Viewer



ArcGIS Integration



Web-Based Data Management



Flexible Storage Options

**CALL GEOTECH TODAY (800) 833-7958**

**Geotech Environmental Equipment, Inc.**

2650 East 40th Avenue • Denver, Colorado 80205

(303) 320-4764 • FAX (303) 322-7242

email: sales@geotechenv.com • website: www.geotechenv.com

## ENVIRO DATA SPECIFICATIONS

### Ease of Use

- Familiar Microsoft® Access® interface
- On-screen tour to help you learn
- Logical menus and forms to guide you
- Based on years of client-driven development
- Open source so you can add features

### Sample Planning

- Plan your sample events, including QC
- Create files for field data entry
- Print chains of custody
- Check for completeness

### Data Import

- Multiple lab-friendly import formats
- Wizard-assisted import
- Field, geologic and engineering data
- Consistency checking during import
- Optional unit conversion during import or output
- Optional limit checking during import
- Parameter aliases – global or by site
- Default values for missing data
- Automated calculations during import
- Undo import feature (even years later)

### Data Storage

- Access® .mdb file – stand-alone or shared
- Optional SQL Server® and Oracle® back-end
- Referential integrity enforced
- Handles duplicates and superseded values
- User-configurable parameters, flags, units, etc.

### Data Export

- Access® databases and Excel® spreadsheets
- Highlight exceedences in Excel® spreadsheets
- Text and RTF files
- Formats for popular industry software
- Many regulatory formats including ERPIMS, SEDD, SCRIBE, etc.

### Data Editing

- Editing forms for all data
- Find and replace for bulk changes
- Optional SQL query-based updates
- Automatically find and remove duplicated data

### Quality Tracking

- Integrated validation and verification tools
- Stores both field and lab QC data
- Data review level tracking
- Integrated use of qualifier flags
- Activity log system for tracking imports and edits

### Reporting

- Multiple standard report formats (50)
- Sophisticated cross-tab layouts
- User-specified formatting of results
- Comparison to multiple regulatory limits
- Flexible handling of non-detects and other flags
- Automated calculations in reports
- Users can create their own queries and reports

### Graphing

- Time sequence graphs
- Automatic scaling
- Comparison to multiple regulatory limits
- Variable number of plots on a page

### Map Displays

- Map display feature within the database
- Bubble maps with data posting
- Export to Surfer and other mapping programs
- Integration with ArcGIS and other GIS programs
- Integrates with Geotech's Enviro Spāse GIS plug-in

### Statistical Analysis

- Multiple statistical reports
- Outlier comparison to historical period
- Charge balance and TDS calculations
- RPD and 95th percentile comparisons

**CALL GEOTECH TODAY (800) 833-7958**

### Geotech Environmental Equipment, Inc.

2650 East 40th Avenue • Denver, Colorado 80205  
(303) 320-4764 • FAX (303) 322-7242  
email: sales@geotechenv.com • website: www.geotechenv.com

## ENVIRO SPÅSE SPECIFICATIONS

### Callout Wizard

Create information-rich callouts automatically

Select fields for the header and detail lines

Color-code exceedences or parameters

Choose your background color

Display Value or Value and Flag

Software automatically places the callouts

You can drag the callouts to fine-tune placement

Numerous sorting and display options

### Crosstab Callout Wizard

Display crosstab tables in callouts

Draw samples/parameters across or down

Multiple display options

Color code exceedences

### Stiff Diagram Wizard

Automatically draw polygons at well locations

Calculate milliequivalent values by parameter

Calculate and display TDS

Color-code based on user-selected TDS cutoff

Charge balance cutoff to suppress display

Draw a legend

User-controlled X and Y scaling

### StickLog Wizard

Draw lithology, concentration, or both

Color-code based on concentration

Draw lithology patterns

Optionally draw top and bottom depths

Draw using elevation or depth

Draw a legend

Use XY offsets for borings for better spacing

### Graph Wizard

Automatically create time-sequence graphs

Up to 12 constituents at one or two scales

Automatic scaling and limit comparison

Automatic adjustment to whole months or years

Complete control over size, scale, and fonts

Automatic or manual placement

Fast and easy!

### Radar Plot Wizard

Draw multiple dates, depths, or parameters

Show regulatory or other target levels

Control scaling and other display options

Flexible handling of dates and depths

### Station Symbols Wizard

Easily draw symbols by station type

Choose from various fields for annotation

Specify locations of annotations

### Station Callouts Wizard

Draw callout boxes with station names

Color code callouts by station groups

Draw a symbol legend

### Clear Map Wizard

Clear the graphics layer with two clicks

### Convert Graphics to Layer

Convert the graphics layer to a named layer

Use the name of your choice

Turn the layers on and off as needed

### Area of Graphic

Easily display the area of a selected graphic

**CALL GEOTECH TODAY (800) 833-7958**

**Geotech Environmental Equipment, Inc.**

2650 East 40th Avenue • Denver, Colorado 80205

(303) 320-4764 • FAX (303) 322-7242

email: sales@geotechenv.com • website: www.geotechenv.com