

Quick Start Guide

Win-Situ® 5 Quick Start Guide

Use Win-Situ 5 with a laptop or a PC and the Aqua TROLL®, Level TROLL® and Rugged TROLL® Instruments. To learn more about Win-Situ 5, refer to the **Help** menu. Training videos are available on the In-Situ® Inc. website www.in-situ.com under Tech Resources.

Install Win-Situ 5

Insert the software CD that came with your product or download Win-Situ 5 from the In-Situ website at www.in-situ.com/software. Follow the on-screen prompts of the Installation Wizard to complete installation.

IMPORTANT: Install COM drivers when prompted.

Connect an In-Situ Instrument to the Computer



1. Laptop or PC
2. TROLL Com
3. RuggedCable
4. In-Situ Instrument

Selecting the Correct COM Port

When you open Win-Situ 5, you are asked if you want to establish a connection to your instrument. If you are using a USB TROLL Com, select the correct COM port by following the steps below. If you are using a serial TROLL Com, the Win-Situ Software should default to the correct COM port, which is usually COM 1.

Computers Using Windows® 7

- a. Minimize the Win-Situ Software.
- b. Click the Windows Start button, and open the Control Panel.
- c. Click Hardware and Sound, and open the Device Manager.
- d. Click the arrow next to Ports (COM and LPT), and locate the USB Serial Port listing. The number listed next to this entry is your COM port address.

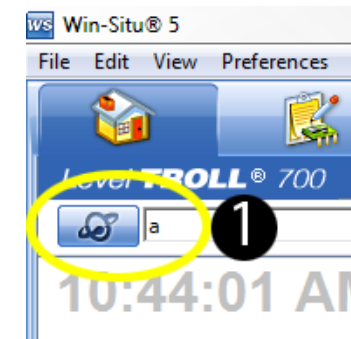
Computers Using Windows® XP

- a. Minimize the Win-Situ Software.
- b. Click the Windows Start button, and open the Control Panel.
- c. Double-click the system icon. Click the Hardware tab, and open the Device Manager.
- d. Click the plus sign next to Ports (COM and LPT), and locate the USB Serial Port listing. The number listed next to this entry is your COM port address.

Once you have determined the correct Com port address, reopen Win-Situ 5 and click on Preferences. Click on Comm Settings, and then click the Port Number menu. Scroll down to find the correct Com port address. Click the Check mark button to accept the changes. Click on the yellow Connect button in the lower right corner to establish a connection to the instrument.

Set up a Data Site

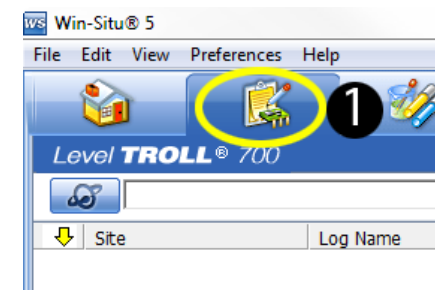
1. Click the Site button.



2. Select either Default Site or click the New button to set up a custom site.
3. Enter a Site name. Entering coordinates and uploading a picture are optional.
4. Click the check mark to save the data site.

Set up a Data Log

1. Click the Logging tab.



2. Click the New button.



3. Select your site, and name the new log.
4. Select the parameters you intend to monitor. You can rearrange their order and select different units.
5. Select a logging method appropriate for your deployment.
6. Configure the logging method.

7. Select a start condition.

NOTE: When an instrument is deployed on a wire, rather than a cable, you will not be able to communicate with it after installation. Select a Scheduled start if you are deploying an instrument on a wire.

8. Select a level reference type.
9. Configure the level reference.

IMPORTANT: Your instrument MUST be installed in its final location to set the level reference correctly. If you are setting up a data log before installing your instrument in its final location, you will need to select either "Set First Logged Reading To" or "Remind Me to Set Reference Later."

Select "Set First Logged Reading To" if you are using a scheduled start, or "Remind Me to Set Reference Later" if you are using a manual start and are NOT deploying the instrument on a wire.

10. Enter a specific gravity value for the deployment.
11. The software displays a summary. Review your selections carefully before clicking the check mark.
12. Start the log. A Scheduled Start log will start automatically at its programmed time. To start a Manual log, go to the Logging tab, highlight the log name, and tap the Start button.

Real-Time Data Readings

To see real-time data readings, click the Play button on the Home screen. The parameter readings will turn black and update periodically. Click the Play button again to stop reading in real time.

IMPORTANT: You cannot create a new log if you have real time readings enabled.

Win-Situ® Mobile Quick Start Guide

Use Win-Situ Mobile with a RuggedReader® Handheld PC and Aqua TROLL®, Level TROLL® and Rugged TROLL® Instruments. To learn more about Win-Situ Mobile, refer to the Help menu. Training videos are available on the In-Situ Inc. website www.in-situ.com under Tech Resources.

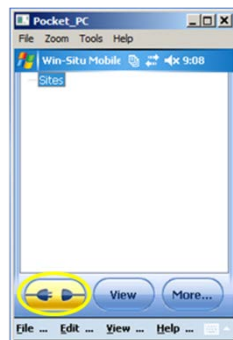
Connect an In-Situ Instrument to the RuggedReader Serial Port



1. RuggedReader
2. TROLL Com Cable Connect
3. RuggedCable
4. In-Situ Instrument

Connect to the Software

With an instrument connected, tap the Start button on the RuggedReader. Tap Win-Situ Mobile. Tap the Connect button, and tap the check mark.



Set up a Data Site

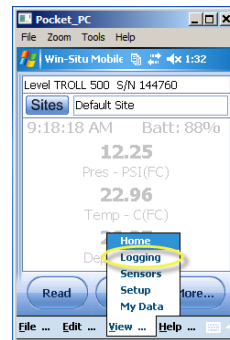
1. Tap the Sites button. Select an existing site or tap the New button to create a new site.



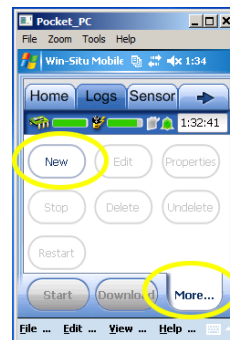
2. Enter information on the subsequent screens and continue by tapping the right arrow button. Tap the check mark button when finished.

Set up a Data Log

1. Tap the View menu and select logging.



2. Tap the More button, and then tap the New button.



3. Add the log name and tap the right arrow button.
4. Select the parameters you want.
5. Rearrange parameter order. Tap Edit to change units.
6. Select a logging method appropriate for your deployment.
7. Configure the logging method.
8. Select a start condition.

NOTE: When an instrument is deployed on a wire, rather than a cable, you will not be able to communicate with it after installation. Select a Scheduled start if you are deploying the instrument on a wire.

9. Select log wrap condition.
10. Select a level reference type.
11. Enter a specific gravity value for the deployment.
12. Configure the level reference.

IMPORTANT: Your instrument MUST be installed in its final location to set the level reference correctly. If you are setting up a data log before installing your instrument in its final location, you will need to select either "Set First Logged Reading To" or "Remind Me to Set Reference Later."

Select "Set First Logged Reading To" if you are using a scheduled start, or "Remind Me to Set Reference Later" if you are using a manual start and are NOT deploying the instrument on a wire.

13. The software displays a summary. Look over your selections carefully before clicking the check mark.
14. Start the log. A Scheduled Start log will start automatically at its programmed time. To start a Manual log, go to the Logging tab, highlight the log name, and tap the Start button.

View or Download the Log

1. To download data, tap the Logging tab, and tap the Download button. Select the desired

download options and tap the check mark when finished.

2. To view the data, tap the View button. Use the View drop-down menu to select the data channel you want to view. Select the date and time interval you want and tap the check mark.



Stop a Log

After you stop a log you cannot restart it.

1. To permanently stop a log that has no scheduled stop, go to the Logging tab, and select the log.
2. Tap the More button, and then tap the Stop button.
3. Make sure that you download the data after you stop a log.

Drop the Connection and Exit Win-Situ Mobile Software

Prior to physically disconnecting the RuggedReader from the communication cable, tap the Connect button. The button changes from blue to yellow and appears disconnected.

To exit Win-Situ Mobile Software, tap the File menu and select Exit.



For more information, contact In-Situ Inc.

221 Lincoln Avenue, Fort Collins, CO 80524
 1-800-446-7488 (toll-free in U.S.A and Canada)
 1-970-498-1500 (international & domestic)
www.in-situ.com