

# Site Environmental Data Management Software



## Enviro Data®

Enviro Data is a flexible, easy-to-use program designed for managing and displaying site environmental data. It uses Microsoft® Access® as a front-end user interface and any ODBC-compliant database such as Access®, SQL Server® or Oracle® as a back-end database server. The open system based on industry standard software allows program modification for specific project requirements. It is available with Single Use or Concurrent Use licensing.

### FEATURES

- Plan your sample events
- Manage field and lab data
- Track water, soil, air, etc.
- Centralize data storage
- Enforce data integrity
- Verification and validation
- Graphs and maps
- Reports and limits
- Access® front-end
- Access®, SQL Server®, or Oracle® data storage
- Inexpensive to buy
- Easy to learn and use
- *Best support in the industry!*

### Wizard-assisted import

### Easy data selection

**CALL GEOTECH TODAY (800) 833-7958**

**Geotech Environmental Equipment, Inc.**

2650 East 40th Avenue • Denver, Colorado 80205

(303) 320-4764 • (800) 833-7958 • FAX (303) 322-7242

email: sales@geotechenv.com website: www.geotechenv.com

# Site Environmental Data Management Software

geotech

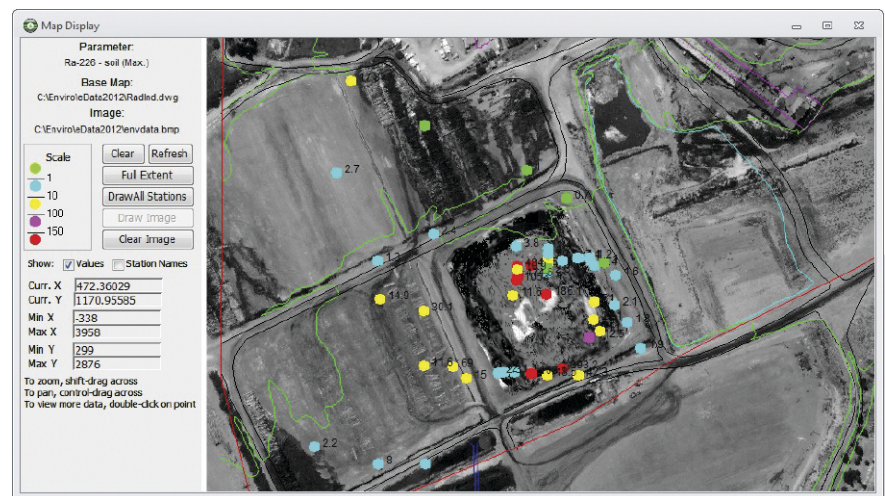
Enviro Data®

## BENEFITS

- Save time and money
- Easy access to results
- Standardized output
- Improve project quality
- Better project decisions
- *Happier clients and regulators!*

Validated Results (Test Site)									
Site: AA									
					Cluster ->	ZZ	ZZ	ZZ	ZZ
					Sample ID ->	AA-BB-003	AA-BB-005	AA-BB-006	AA-BB-007
					Date ->	10/9/2001	10/25/2001	10/17/2001	1/14/2002
					Depth ->				
Analyte	Units	Base Background	BTAG Sediment	Industrial Sediment RBC's	Residential Sediment RBC				
Pesticides									
4,4'-DDD	ug/kg	8.3	16	NA	NA	29 u / 20	60 U / 60	50 U / 7.5	-
4,4'-DDE	ug/kg	11	2.2	NA	NA	37 u / 20	60 U / 60	31 u / 7.5	-
4,4'-DDT	ug/kg	15.4	1.58	NA	NA	20 U / 20	60 U / 60	7.5 U / 7.5	-
ALDRIN	ug/kg	NA	NA	340	38	10 U / 10	29 U / 29	3.7 U / 3.7	-
ALPHA-BHC	ug/kg	NA	NA	NA	NA	10 U / 10	29 U / 29	3.7 U / 3.7	-
ALPHA-CHLORDANE	ug/kg	5	NA	NA	NA	10 U / 10	29 U / 29	3.7 U / 3.7	-
BETA-BHC	ug/kg	NA	NA	NA	NA	10 U / 10	29 U / 29	3.7 U / 3.7	-
DELTA-BHC	ug/kg	NA	NA	NA	NA	10 U / 10	29 U / 29	3.7 U / 3.7	-
DIELDRIN	ug/kg	NA	NA	360	40	20 U / 20	60 U / 60	7.5 U / 7.5	-
ENDOSULFAN I	ug/kg	NA	NA	NA	NA	10 U / 10	29 U / 29	3.7 U / 3.7	-
ENDOSULFAN II	ug/kg	NA	NA	NA	NA	20 U / 20	60 U / 60	7.5 U / 7.5	-
ENDOSULFAN SULFATE	ug/kg	NA	NA	NA	NA	20 U / 20	60 U / 60	7.5 U / 7.5	-
ENDRIN	ug/kg	NA	NA	610000	23000	20 U / 20	60 U / 60	7.5 U / 7.5	-
ENDRIN ALDEHYDE	ug/kg	NA	NA	NA	NA	20 U / 20	60 U / 60	7.5 U / 7.5	-
ENDRIN KETONE	ug/kg	NA	NA	NA	NA	20 U / 20	60 U / 60	7.5 U / 7.5	-
gamma-BHC (Lindane)	ug/kg	3.14	NA	NA	NA	10 U / 10	29 U / 29	3.7 U / 3.7	-
GAMMA-CHLORDANE	ug/kg	NA	NA	NA	NA	10 U / 10	29 U / 29	3.7 U / 3.7	-
HEPTACHLOR	ug/kg	3.14	NA	1300	140	10 U / 10	29 U / 29	3.7 U / 3.7	-
HEPTACHLOR EPOXIDE	ug/kg	NA	NA	650	70	10 U / 10	29 U / 29	3.7 U / 3.7	-
METHOXYCHLOR	ug/kg	NA	NA	1E+07	390000	100 U / 100	290 U / 290	37 U / 37	-
TOXAPHENE	ug/kg	NA	NA	52000	580	200 U / 200	590 U / 590	74 U / 74	-
PCBs									
AROCCLOR-1016	ug/kg	NA	22.7	82000	5500	20 U / 20	29 U / 29	37 U / 37	-
AROCCLOR-1221	ug/kg	NA	22.7	2900	320	20 U / 20	29 U / 29	37 U / 37	-
AROCCLOR-1232	ug/kg	NA	22.7	2900	320	20 U / 20	29 U / 29	37 U / 37	-
AROCCLOR-1242	ug/kg	NA	22.7	2900	320	20 U / 20	29 U / 29	37 U / 37	-

Many sophisticated report formats



Create maps within the database

**CALL GEOTECH TODAY (800) 833-7958**

Geotech Environmental Equipment, Inc.

2650 East 40th Avenue • Denver, Colorado 80205

(303) 320-4764 • (800) 833-7958 • FAX (303) 322-7242

email: sales@geotechenv.com website: www.geotechenv.com

# Site Environmental Data Management Software



## Enviro Data®

### SPECIFICATIONS

#### Ease of Use

Familiar Microsoft® Access® interface  
On-screen tour to help you learn  
Logical menus and forms to guide you  
Based on years of client-driven development  
Open source so you can add features

#### Sample Planning

Plan your sample events, including QC  
Create files for field data entry  
Print chains of custody  
Check for completeness

#### Data Import

Multiple lab-friendly import formats  
Wizard-assisted import  
Field, geologic and engineering data  
Consistency checking during import  
Optional unit conversion during import or output  
Optional limit checking during import  
Parameter aliases – global or by site  
Default values for missing data  
Automated calculations during import  
Undo import feature (even years later)

#### Data Storage

Access® .mdb file – stand-alone or shared  
Optional SQL Server® and Oracle® back-end  
Referential integrity enforced  
Handles duplicates and superseded values  
User-configurable parameters, flags, units, etc.

#### Data Export

Access® databases and Excel® spreadsheets  
Highlight exceedences in Excel® spreadsheets  
Text and RTF files  
Formats for popular industry software  
Many regulatory formats including ERPIMS, SEDD, SCRIBE, etc.

#### Data Editing

Editing forms for all data  
Find and replace for bulk changes  
Optional SQL query-based updates  
Automatically find and remove duplicated data

#### Quality Tracking

Integrated validation and verification tools  
Stores both field and lab QC data  
Data review level tracking  
Integrated use of qualifier flags  
Activity log system for tracking imports and edits

#### Reporting

Multiple standard report formats (50)  
Sophisticated cross-tab layouts  
User-specified formatting of results  
Comparison to multiple regulatory limits  
Flexible handling of non-detects and other flags  
Automated calculations in reports  
Users can create their own queries and reports

#### Graphing

Time sequence graphs  
Automatic scaling  
Comparison to multiple regulatory limits  
Variable number of plots on a page

#### Map Displays

Map display feature within the database  
Bubble maps with data posting  
Export to Surfer and other mapping programs  
Integration with ArcGIS and other GIS programs  
Integrates with Geotech's Enviro Spase GIS plug-in

#### Statistical Analysis

Multiple statistical reports  
Outlier comparison to historical period  
Charge balance and TDS calculations  
RPD and 95th percentile comparisons

**CALL GEOTECH TODAY (800) 833-7958**

**Geotech Environmental Equipment, Inc.**

2650 East 40th Avenue • Denver, Colorado 80205  
(303) 320-4764 • **(800) 833-7958** • FAX (303) 322-7242  
email: sales@geotechenv.com website: www.geotechenv.com