

Passive No-Purge Sampling

Snap Sampler®

The Snap Sampler® is a passive groundwater sampling system which seals groundwater samples *in situ*, and simplifies sample collection by avoiding the purging process. The Snap Sampler® provides an *in situ* quality sample.

FEATURES

- Meets the new ASTM Standard D7929-14 for passive groundwater sampling
- The Snap Sampler® collects a downhole water sample that can be tested for any chemical – there are no analyte limitations.
- Snap Samplers capture undisturbed samples from a specific position in the well without agitation. Excellent for a high quality sealed sample, turbidity-sensitive analytes (such as metals and many organic chemicals) and low yield wells.
- Snap Samplers are dedicated (all water collected is utilized for sample analysis). Bottles are sent to the lab and replaced with fresh units during each sampling event.
- No solid or liquid contaminated waste handling is required.

SPECIFICATIONS

Input Power	<i>Pneumatic System</i>	12V Air Pump
	<i>Trigger Activating Pressure</i>	10-30 PSI (.69-2 bar) – typical
	<i>Pressure Block</i>	Includes fittings and gauge for applying pressure from pump to pneumatic actuator
Maximum Operating Pressure¹		80 PSI (5.5 bar)
Minimum Operating Pressure¹		~10 PSI (~.69 bar)
Maximum Sampling Depth		2,500 ft. (609 m)
Capacity		Up to 6 Snap Samplers in any combination can be "stacked" with one actuator
Operating Temperature		0° to 100°C
Input Protection		Pressure Block has 80 PSI (5.5 bar) relief valve
Weight	<i>40 ml Snap Sampler</i>	3 oz. (85 g) – each, empty
	<i>125 ml Snap Sampler</i>	3 oz. (85 g) – each, empty
	<i>Pneumatic Actuator</i>	13 oz. (368 g)
	<i>Stainless Steel Weight</i>	3.1 lb. (1.4 kg) – optional
Length	<i>40 ml Snap Sampler</i>	8 in. (20 cm)
	<i>125 ml Snap Sampler</i>	10.5 in. (26.7 cm)
	<i>Pneumatic Actuator</i>	11 in. (27.9 cm)
Outer Diameter	<i>40 ml Snap Sampler</i>	1.7 in. (4.3 cm)
	<i>125 ml Snap Sampler</i>	1.85 in. (4.7 cm) – with 125 ml bottle
	<i>350 ml Snap Sampler</i>	3.4 in. (8.6 cm) – with 350 ml bottle
Min. Well I.D.	<i>40 ml Snap Sampler</i>	2 in. (5 cm)
	<i>125 ml Snap Sampler</i>	2 in. (5 cm)
	<i>350 ml Snap Sampler</i>	4 in. (10 cm)
Material		Acetal

¹ Operating pressure not dependent on depth; activating pressure depends on number of samplers deployed in one string, and unit specific efficiency.



CALL GEOTECH TODAY (800) 833-7958

Geotech Environmental Equipment, Inc.

2650 East 40th Avenue • Denver, Colorado 80205

(303) 320-4764 • **(800) 833-7958** • FAX (303) 322-7242

email: sales@geotechenv.com website: www.geotechenv.com

Passive No-Purge Sampling

Snap Sampler®

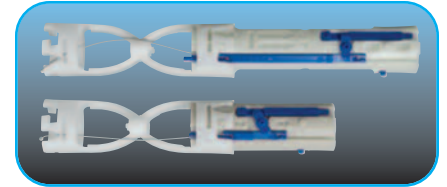
SYSTEM COMPONENTS

Samplers

PH40 (40 ml) Snap Sampler

PH125 (125 ml) Snap Sampler (holds 125 ml and 350 ml bottles)

Note: Stack in any combination up to 6 on one trigger line; Snap Samplers come with stainless connector cables between samplers as required.



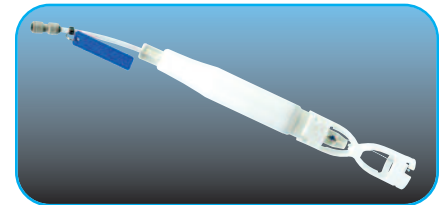
Trigger

Pneumatic Trigger (for deployments up to ~600ft./183 m)

Downhole Pneumatic Actuator – approx. 30 psi (2 bar) to activate, any depth

Trigger Air Line Construction (cut to length, plus hangers and fittings)

Plus Air Line Tubing per foot (1/4" x 1/8" HDPE)



Accessories (for secure well head protection and support of Snap Trigger lines)

2-Inch (5-cm) Dock (locking well cap plus support ring, for SCH40 and SCH80 PVC)

4-Inch (10-cm) Dock (locking well cap plus support ring, for SCH40 and SCH80 PVC)

3 lb. (1.4 kg) Stainless Steel Weight is recommended with pneumatics deeper than ~100 ft./30 m



Sampling Containers

Package of two 40 ml Snap Sampler VOA vials, includes septa caps and labels*
Amber VOA vials are also available

One 125 ml Snap Sampler POLY bottle, includes septa caps and label*

One 350 ml Snap Sampler POLY bottle, includes septa caps and label*

* For the first deployment you will need two bottles: One for the first sample, and one to replace in the Snap Sampler for the next sampling event.



Tools and Supplies:

Pneumatic Kit

Includes two screw driver tools, one nipper tool, Standard Operating Procedure, laminated instruction cards, spare parts and screw repair kit.

- Pressure Block with 100 psi pressure gauge and Schrader (bicycle pump) inlet valve.
- 12 Volt Air Pump with cigarette lighter plug connection.
- Pelican Carry Case



CALL GEOTECH TODAY (800) 833-7958

Geotech Environmental Equipment, Inc.

2650 East 40th Avenue • Denver, Colorado 80205

(303) 320-4764 • **(800) 833-7958** • FAX (303) 322-7242

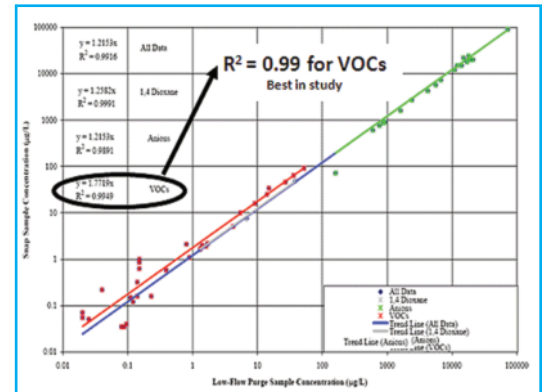
email: sales@geotechenv.com website: www.geotechenv.com

Passive No-Purge Sampling

Snap Sampler®

20 REASONS TO CHOOSE THE SNAP SAMPLER® FOR GROUNDWATER MONITORING...

1. *Technology adds value* – this is not just a bailer replacement – the Snap Sampler is a completely different and better way to sample: *Seal your sample in lab-ready bottles before you even remove it from the well.*
2. *Snap Sampling eliminates purging* – saving time and avoiding purge water waste.
3. Snap Sampling can be used for *ANY analyte*.
4. Snap Sampling is proven to be *equivalent to low flow purging and sampling*: *There are 5 Department of Defense ESTCP reports; a peer-reviewed journal paper in Environmental Science & Technology; no negative bias for specific chemicals; and no question about where the sample comes from. In other words: the Snap Sampler works as advertised for all analytes.*
5. A new *ASTM Standard D7929-14* for passive sampling makes method conversion easy and eliminates concerns about defensibility.
6. Simple *one-person assembly and operation*.
7. *No heavy lifting* of water or equipment.
8. Modular system *made for your sampling needs* – no more, no less.
9. *Deep sampling* to at least 2,500 feet.
10. No motion and *no agitation* of the device during sample collection – just activate closure of the Snap Sampler bottles in place.
11. Passive equilibration at a fixed position captures the *exact same sampling position every time*.
12. *Collect the volume you need* for most applications – no more, no less.
13. *Lifetime warranty* on dedicated downhole gear – lasts as long as the well.
14. Dedicated equipment *avoids chemical sorption concerns*.
15. *VOC and dissolved gas sampling virtually perfected* with VOA vials sealed in the well and never exposed.
16. *Simple logistics* – just bring replacement bottles to replace those you collect as samples.
17. Sampler and bottle materials are *more chemically inert than the well itself* – no worries about corrosion or malfunction due to adverse geochemistry.
18. Cost is *similar to other dedicated sampling systems* – like low flow bladder pumps – and you buy only what you need for the application. Ongoing savings of 50%, 60% or more is often achieved.
19. *Consistent sampling adds further value* to long-term-trend monitoring.
20. Indirect cost savings achievable through *better data*.



Low Flow vs Snap Sampler®



2 VOA-size Snap Samplers. Up to 6 in different combinations can be assembled together.

CALL GEOTECH TODAY (800) 833-7958

Geotech Environmental Equipment, Inc.

2650 East 40th Avenue • Denver, Colorado 80205

(303) 320-4764 • (800) 833-7958 • FAX (303) 322-7242

email: sales@geotechenv.com website: www.geotechenv.com