

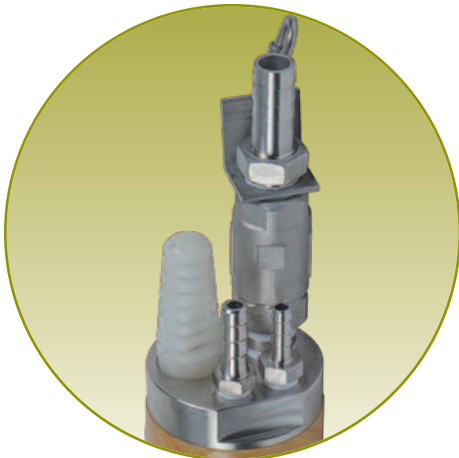
# Total Fluids Recovery Pump

## *Geotech AR4 4" Auto-Reclaimer*

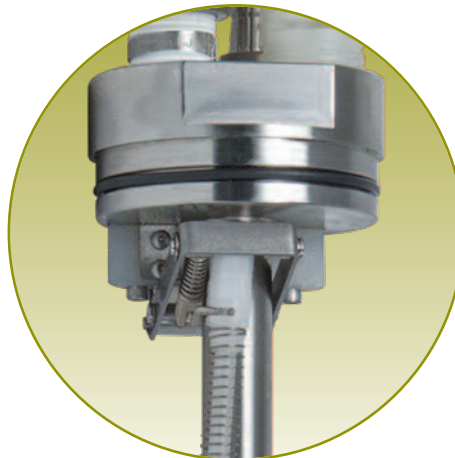
The AR4 is designed to pump floating hydrocarbons, leachate, and condensate in total fluids applications. The AR4 is operated automatically, and needs no controller. Everything needed to operate the system is built into the pump. The design withstands the harshest and most corrosive environments such as landfills or mines.

### FEATURES

- Intrinsically safe design and approved for hazardous environments
- Fits 4" or larger diameter wells
- Ability to pump from 250' below ground
- Can pump particles up to 1/8" diameter
- Consistently pumps fluids as light as 0.70 SpG reliably
- New adjustment-free valve mechanism – no magnets
- Improved float design for maximum buoyancy and chemical compatibility
- Optimal working pressures as low as 1 psi above head pressure
- Standard light-weight composite housing, corrosive resistant 316 stainless steel and PVDF parts for less maintenance
- Fast and simple disassembly for easy maintenance



Pump Head



Pump Valve



Composite  
Housing

Stainless  
Steel  
Housing

**CALL GEOTECH TODAY (800) 833-7958**

**Geotech Environmental Equipment, Inc.**

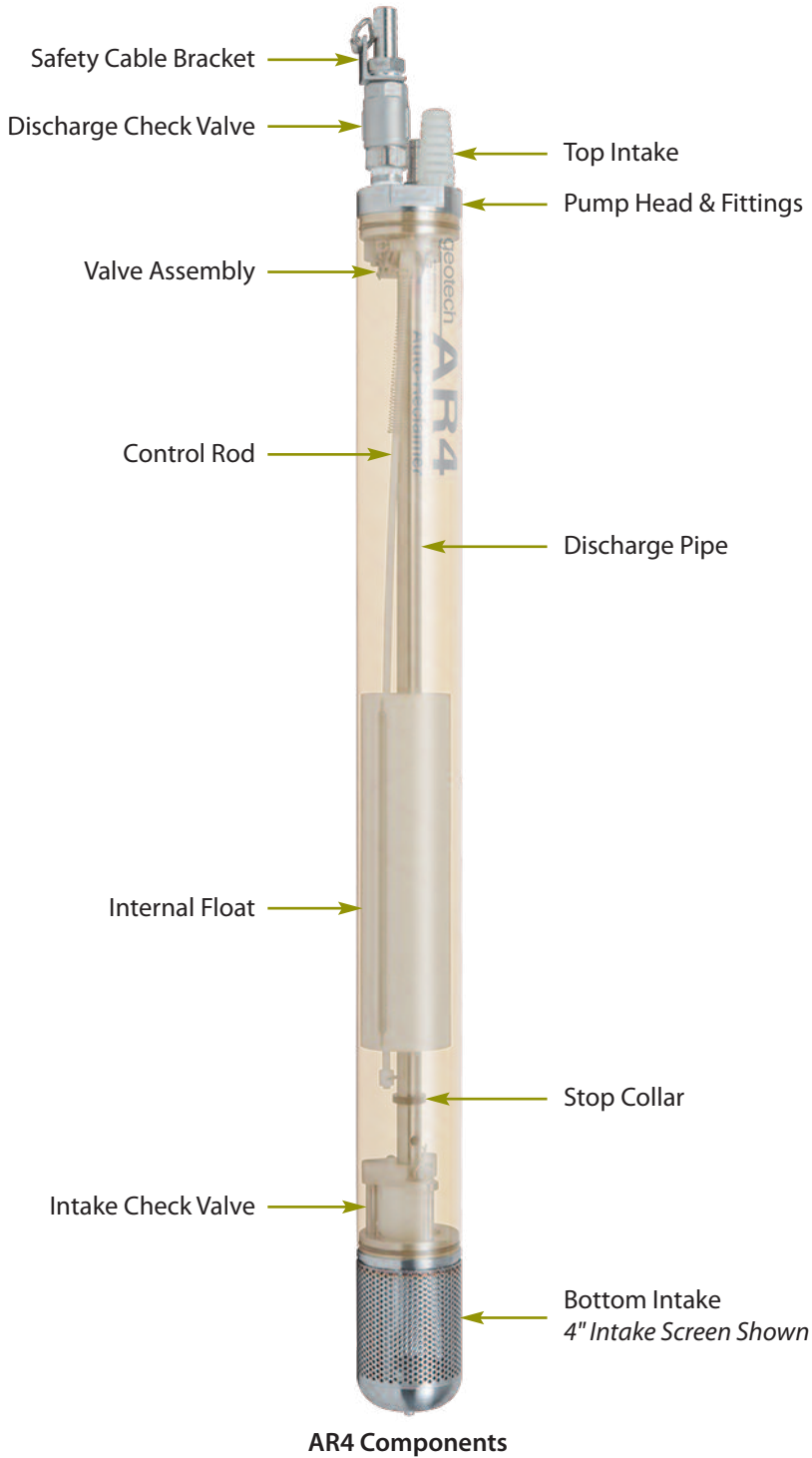
2650 East 40th Avenue • Denver, Colorado 80205

(303) 320-4764 • **(800) 833-7958** • FAX (303) 322-7242

email: [sales@geotechenv.com](mailto:sales@geotechenv.com) website: [www.geotechenv.com](http://www.geotechenv.com)

# Total Fluids Recovery Pump

## Geotech AR4 4" Auto-Reclaimer



Top Intake



Optional Quick-Connect Fittings

**CALL GEOTECH TODAY (800) 833-7958**

**Geotech Environmental Equipment, Inc.**  
2650 East 40th Avenue • Denver, Colorado 80205  
(303) 320-4764 • (800) 833-7958 • FAX (303) 322-7242  
email: sales@geotechenv.com website: www.geotechenv.com

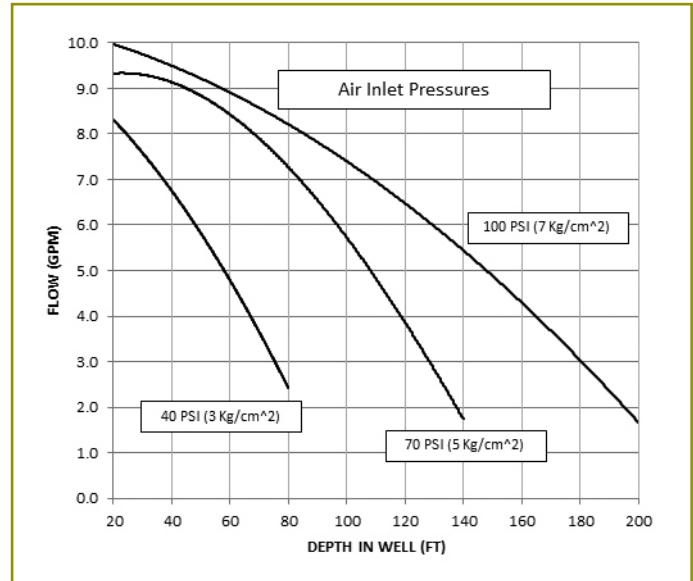
# Total Fluids Recovery Pump



## Geotech AR4 4" Auto-Reclaimer

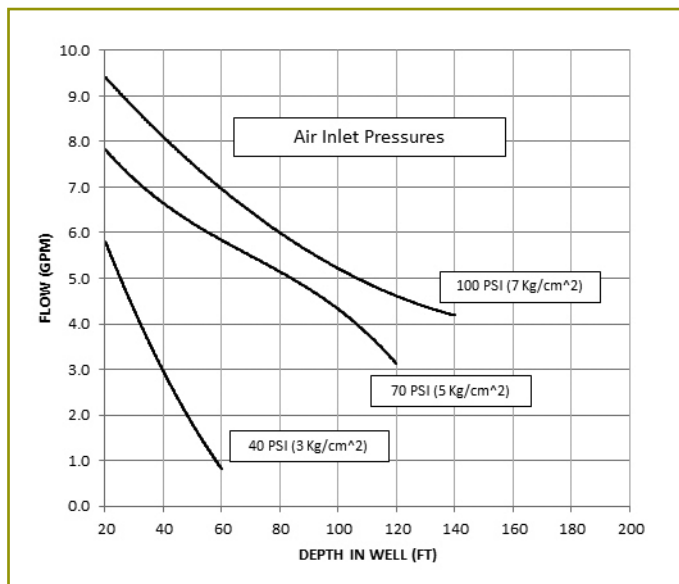
### SPECIFICATIONS

	SHORT	LONG	EXT
<b>Outside Diameter:</b>	3.5" (8.9 cm)		
<b>Lengths Up To:</b>	48" (122 cm)	60" (152 cm)	72" (183 cm)
<b>Weight:</b>	13.5 lbs. (6 kg)	15.6 lbs. (7 kg)	17.7 lbs. (8 kg)
<b>Min. Activation Level:</b>	35" (89 cm)	47" (119 cm)	59" (150 cm)
<b>Operating Pressure Range:</b>	10-120 psi (0.7-8.5 kg/cm <sup>2</sup> )		
<b>Max. Operating Temp:</b>	220°F (104°C)		
<b>Fluid Volume/Cycle*:</b>	.7 gal. (2.6 liter)	1.0 gal. (3.8 liter)	1.5 gal. (5.6 liter)
<b>Max. Flow Rate**:</b>	8.5 gpm (32 lpm)		
<b>Standard Fittings:</b>	SS Barb		
Fluid Discharge	¾" x ¾" MPT		
Air Supply	¾" x ¾" MPT		
Air Exhaust	½" x ¾" MPT		
<b>Materials of Construction:</b>	Includes: SS316, FRP, FPM, PVDF, HDPE, PTFE, Viton®		

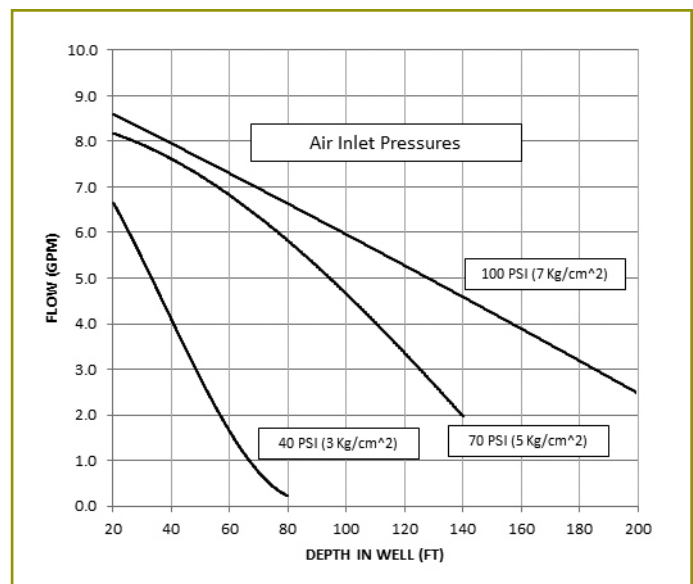


**AR4 Short, Bottom Inlet**  
10' (3m) Submergence, ¾" (19mm) ID Hose

\*Specific gravity and viscosities will alter specifications  
\*\*Flow rates will vary with site conditions



**AR4 Long, Bottom Inlet**  
10' (3m) Submergence, ¾" (19mm) ID Hose



**AR4 Extended, Bottom Inlet**  
10' (3m) Submergence, ¾" (19mm) ID Hose

**CALL GEOTECH TODAY (800) 833-7958**

**Geotech Environmental Equipment, Inc.**  
 2650 East 40th Avenue • Denver, Colorado 80205  
 (303) 320-4764 • **(800) 833-7958** • FAX (303) 322-7242  
 email: sales@geotechenv.com website: www.geotechenv.com

# Total Fluids Recovery Pump

## Geotech AR4 Accessories

### PNEUMATIC CYCLE COUNTER

The Pneumatic Cycle Counter is mounted inline after the filter and allows you to total the volumes pumped and determine service and maintenance schedules.

**Specifications:**

<b>Model</b>	GEOPC350	
<b>Material</b>	464 Naval Brass	
<b>Size</b>	5" L x 2" W	
<b>Thread Type</b>	¼" FPT	
<b>Pressure Range</b>	40-275 psi	
<b>No. of Counts Before Rollover</b>	999,999	
<b>Air Supply Tubing Sizes:</b>	¾" ID	½" ID
Minimum Distance To Pump	15'	15'
Maximum Distance From Pump	350'	300'



### TUBING

**Nylon 12:**

<b>Air Supply</b>	¾" ID x ½" OD
<b>Exhaust</b>	½" ID x 5/8" OD
<b>Discharge</b>	¾" ID x 1" OD
<b>Min. Bend Radius</b>	24"
<b>Max. Pressure</b>	330 psig @ 70°F
<b>Max. Continuous Length</b>	500'

**Poly:**

<b>Air Supply</b>	¾" ID x ½" OD
<b>Exhaust</b>	½" ID x 5/8" OD
<b>Discharge</b>	¾" ID x 1" OD
<b>Min. Bend Radius</b>	24"
<b>Max. Pressure</b>	120 psig @ 70°F
<b>Max. Continuous Length</b>	300'



### COMPRESSORS & REGULATORS

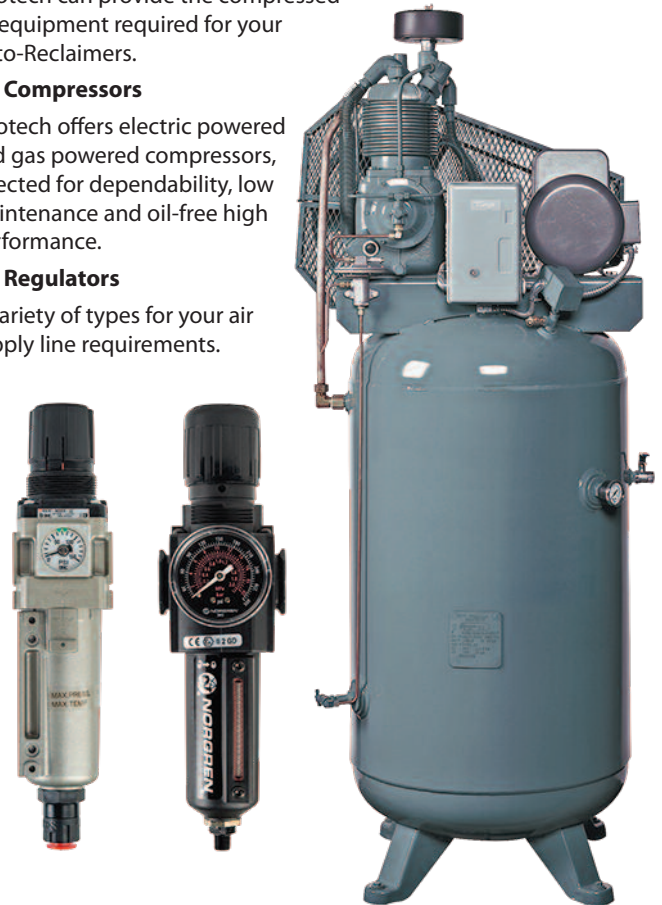
Geotech can provide the compressed air equipment required for your Auto-Reclaimers.

**Air Compressors**

Geotech offers electric powered and gas powered compressors, selected for dependability, low maintenance and oil-free high performance.

**Air Regulators**

A variety of types for your air supply line requirements.



### WELL CAPS AND ACCESSORIES

**A Standard Slip**

Penetrations, with safety cable hanger  
Available for 2, 3, 4, 6, and 8 inch diameter wells

**B Compression Slip**

Compression fittings, with safety cable hanger  
Available for 2, 3, 4, 6, and 8 inch diameter wells

**C Vacuum Caps**

Potted well cap for a complete vacuum seal  
Barbed style fittings, with safety cable hanger  
Available with quick-connect fittings  
Available for 2, 3, 4, 6, and 8 inch diameter wells

**Standard Fittings Provided:**

- Air – ¾" Barb
- Exhaust – ½" Barb
- Discharge – ¾" Barb

Custom well caps and quick-connect fittings available upon request.

